



岐阜県 恵那市



Let's enjoy walking trips

ENNA CITY SIGHTSEEING GUIDE BOOK



Let's visit several places by car



For details and pamphlets, inquire at the offices below.

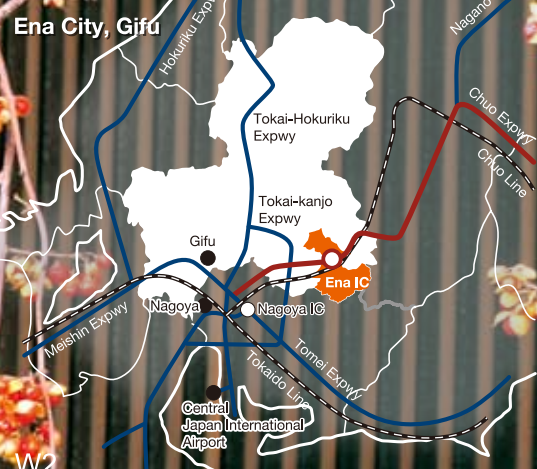
Ena City Tourist Association (Next to Ena Sta) TEL 0573-25-4058 <http://www.hub24.jp/ena/>

Iwamura Branch TEL 0573-43-3231 Akechi Branch TEL 0573-54-2111 Kushihara Branch TEL 0573-52-2111
Yamaoka Branch TEL 0573-56-2111 Kamiyahagi Branch TEL 0573-48-3366

Tourism Division, Ena City Hall TEL 0573-26-2111 <http://www.city.ena.lg.jp/>

えな 恵那 を歩いていこう

胸次 虚明なれば
 感応神速なり
 佐藤一斎 二十六



Walking Trips in Ena



Get away from busy days, enjoy a slow trip and feel relaxed.

A traveler's guardian deity on a sidewalk. Potted plants under the eaves.

Wind moving short curtains gently. A savory smell of "Gohei-mochi" being barbecued.

They all make you stop, squat down, turn around, and look up.

It is fun to stay at a local inn without any plan, just out of curiosity.

Ena City welcomes you with its old streets, tasty meals and warm hearts.



Nihon Taisho-mura



Ena Gorge



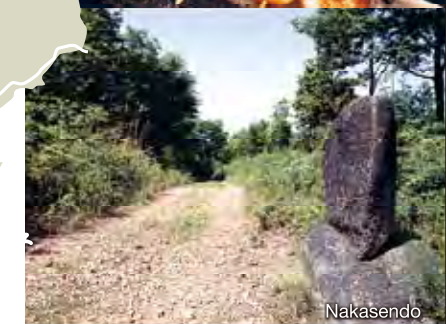
Historical streets in Iwamura



Akechi Railway



Gohei-mochi



Nakasendo

Local road and railway route map

Akechi Railway

Nakasendo

Chuo Expwy

JR Chuo Line

● Akechi Railway



See attached map for timetable and fares.
Inquiry: TEL 0573-54-4101

● Sightseeing bus

Service routes change by the season. Ask for details at the Ena City Tourist Association.
TEL 0573-25-4058

Symbol key

- photography spot
- food & drink
- shopping
- accommodation

- experience
- information spot
- hot spring



Nihon Taisho-mura

Retrospective town

**The town looks as it did in the Taisho period.
The entire town greets you warmly.**

“This is where warm-hearted people used to live in between Meiji and Showa period. We established the Taisho-mura not because we wanted to reproduce those things which people think were good back in old days, but because we wanted to wrap the entire town with the warm feeling of the Taisho period,” said Yoko Tsukasa, the mayor of the town. Nihon Taisho-mura is not an amusement park. It is a space where you can enjoy the old good time’ s aura and architecture in the Taisho period and where people welcome you with warmth. Akechi Village flourished in silk industry. Young female workers and merchants used to come and go and western cultures spread throughout the town. You can easily feel the modern atmosphere of that time. People still live in old private houses and their potted plants under the eaves welcome you. You can see the town without getting lost by requesting a volunteer tour guide who specializes in the local history and town information.



① Nihon Taisho-mura local government office

This building used to be the town government office, and is a free museum as well as a rest area now.

Free admission TEL 0573-54-3944



② Taisho Romance Hall

This building is in a modern style of the era and is a memorial to the first town mayor Mieko Takamine and the president of the town assembly Kiyotaka Kasugano.

Admission: adult ¥500, child ¥300 (common ticket for 4 facilities)



③ Old Miyake' s House

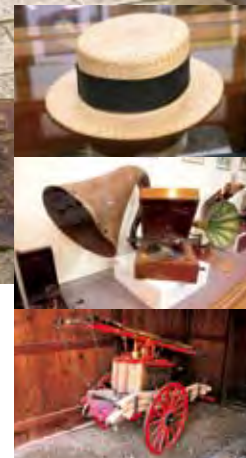
This stately old house was built more than 300 years ago and still retains its thatched roof styling.

Free admission TEL 0573-54-4745



Taisho Lane

Here you will find storehouses for rice from the Meiji and Taisho periods and storehouses for wholesale kimono stores from the Edo period along this lane. These storehouses are made fireproof with black weatherboards off the outer walls and walls of soil.



Access

- By Akechi Railway : 50 min from Ena Sta.
- By car :40 min from Ena IC

Time trip to the Taisho period. Enjoy retrospective displays.

Each museum displays nostalgic household articles, local toys, textbooks, records, film posters, and etc. So you can learn about the education, culture, likings, and etc from Meiji to early Showa period. Among all, series of trumpet shaped gramophones are the most impressive.



④ Postal and Telegraphic Museum

This archive building provides information about postal and telegraphic services from the Meiji period to the present.

Free admission TEL 0573-54-4745



⑤ Taisho-mura Museum

This building used to be a storehouse for silk worm cocoons which a bank bought from farmers.

Admission: adult ¥500, child ¥300 (common ticket for 4 facilities)



⑥ Kaisoho Center (Omoide School)

This building used to a hospital opened in early Meiji period and is now used as a place where people remember the past through learning.

Admission: ¥ 200 Closed on Mondays



⑦ Toy Museum

Here you can see a number of toys, or " omocha ", which were popular between Meiji and early Showa period.

Admission: adult ¥500, child ¥300 (common ticket for 4 facilities)



⑧ Taisho Era Hall

This hall features displays on the lifestyle during the Taisho period and restores things like newspapers, posters, gramophones, cameras ,and etc.

Admission: adult ¥500, child ¥300 (common ticket for 4 facilities)

● A series of biographies of famous people in Ena



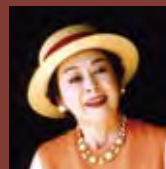
Mitsuhide Akechi

He defeated the warlord Nobunaga Oda at the incident at Honnoji Temple. A legend says that he was born in Akechi Town.



Hosui Yamamoto

He was born in Akechi Town in 1850. He was a western painting pioneer in Japan and was active in Europe. His contribution to Japanese western painting was immense. He was in the army during the first Shino-Japanese War and the Russo-Japanese War, and did portraiture of Hirofumi Ito and Emperor Meiji. He led a life full of ups and downs. His paintings are displayed in Taisho Roman-kan.



Yoko Tsukasa

She made her debut as a film actress in 1954 and appeared in 150 films since then. Now she is active in stage performances. She took office as the second mayor in May 1995.

● Mayor of Taisho-mura

● Local Eats

Semi-western dishes are a symbol of modernism during the Taisho period. Among all, croquettes, hash and rice, and fried pork cutlet are most representative of the time. You find several stores selling croquettes wrapped in a bag. So walk around the town with a croquette in your hand and eat it when you feel hungry.



Experience here!

You can put on a splashed-pattern kimono reminiscent of the Taisho period at Taisho-mura local government office or Taisho Roman-kan.



**Nihon Taisho-mura local government office
TEL 0573-54-3944
Taisho Romance Hall
TEL 0573-54-2014**

For more information:

Get “Taisho-mura General Guidebook” and “Taisho-mura Illustration Map” at either Ena Station, Akechi Station, or the Taisho-mura parking lot.

**Information
TEL 0573-54-3944
<http://www.nihon-taishomura.or.jp/>**



The ruins of Iwamura Castle and the castle town

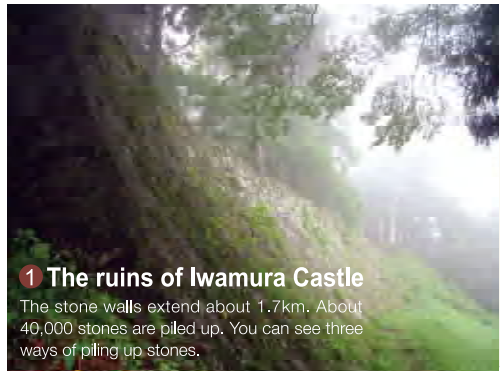
A hero and female castle lord lived here.

Name of a housewife is on a short curtain in the historical town.
Town of the female castle lord is filled with kindness and warmth.

Since it was built on the highest place (717m above sea) for a castle in Japan, the ruins of Iwamura Castle have been selected as one of three major mountain castles in Japan. It also has been selected as one of 100 superior castles in Japan. It was an impregnable castle by taking advantage of the altitude and geographical features. The builders took advantage of the unique foggy climate around the area in constructing the castle giving it the nickname “Foggy Castle” . It lasted the Warring States period and 300 years of the Edo period since its construction in 1185. It continued to stand about 700 years until the government ordered to destroy all the castles in the Meiji period. One of the famous lords of the castle was a woman called “Onna Joshu” and protected her vassals and people while she chose a political marriage. Although the castle is gone, the way the

stone walls and wells were made says much about the technologies at that time. Materials about those technologies are restored in History Museum.

The castle town is divided into two areas. Samurai residences are located on the north side of Iwamura River and merchant residences are located on the south side of it. You can find sea cucumber-patterned walls and lattices which are iconic of the old ages here and there.



1 The ruins of Iwamura Castle
The stone walls extend about 1.7km. About 40,000 stones are piled up. You can see three ways of piling up stones.



Walk along the historical streets enjoying a gentle breeze.

The main street which extends from Iwamura Station to the ruins of Iwamura Castle has been selected as “Important Preservation Districts for Groups of Historic Buildings” . You can find a name of each house’ s proprietress printed on a short curtain under the eave which reminds you of the female lord of a castle. You



Sea cucumber-patterned walls

These walls are found in a daimyo’ s residence and a castle.

can learn unique ideas and skills of ancient people in the structures of wine cellars, sweetshops, and kimono shops, as well as in sea cucumber-patterned walls and watercourses going under houses.



4 Katsukawa’ s House

This facility consists of two houses which are two story buildings. The study, tea ceremony room and rooms for employees tell about how they lived back then.

Free admission Closed on Tuesdays



5 Tosaya

You can learn how people dyed kimono deep blue at that time.

Admission ¥200 Closed on Wednesdays



6 Kimura’ s House

The style of the Edo period still remains in this house which reminds you of the history of the castle town.

Admission ¥200 Closed on Mondays

Historical streets

These are the streets of merchant stores which played an important role in commercial activities since modern times. Stately buildings indicate the prosperity at that time. Historically valuable signboards still remain intact.



Access

- By Akechi Railway : 30 min from Ena Sta.
- By car : 20 min from Ena IC



2 Utako Shimoda’ s Study Room

Utako Shimoda was a pioneer of a female education as well as a poet from the Meiji to the Showa period. This building is a reconstruction of her study room.

Iwamura branch office parking

Hand-made soba

Katsukawa’ s House

Iwamura Shrine



3 History Museum

This is a museum which displays materials of more than 800 years history of Iwamura. It preserves “ Iwamura Castle Illustration Map” and “ Self portrait of Issai Sato” which are historically valuable.

Admission: general ¥400

people 65 and over ¥200

high school and under free

Iwamura Joshi Park

The entrance area of the ruins of Iwamura castle is called “Joshi Park” . The ruins of Iwamura Feudal Lord House, History Museum and Taiko-Yagura tell a lot about the history of the area. Every August, a torchlight performance of Noh is played at the ruins of Iwamura Feudal Lord House.



Front gate of Chishin-kan



Taiko-Yagura

●A series of biographies of famous people in Ena



Issai Sato

He was born in 1772 as the second son of a feudal lord. He served as a vassal of a feudal clan and learned

Confucianism. The government regarded him as a master of Confucianism. Educated people, cultured people and politicians read his collection of sayings.



Utako Shimoda

She was educated since her childhood and composed Japanese poems and Chinese

poems. When she was 19, she served in the Imperial Household Agency and her Majesty considered her to be a talented poet. After that, she was engaged in female education and established schools for girls. She was a representative person of female education in the Meiji and Taisho periods.

●Local Eats

You can find a sake distillery and Japanese sweets shops with traditional manufacturing along the old streets. Enjoy the taste of the old days with some handmade Soba or Udon or relax in an old cafe.



Don't miss!

A collection of sayings by Issai Sato

When you walk along the old streets, you find those sayings here and there.



For more information:

you can get “Iwamura Castle Town Illustration Map” and “Iwamura Guidebook” at Iwamura Station, tourist information, and etc.

Inquire at
Ena City Tourist Association
Iwamura branch office
TEL 0573-43-3231
<http://www.iw.vrtc.net/~fureai-yakata/kankou/>

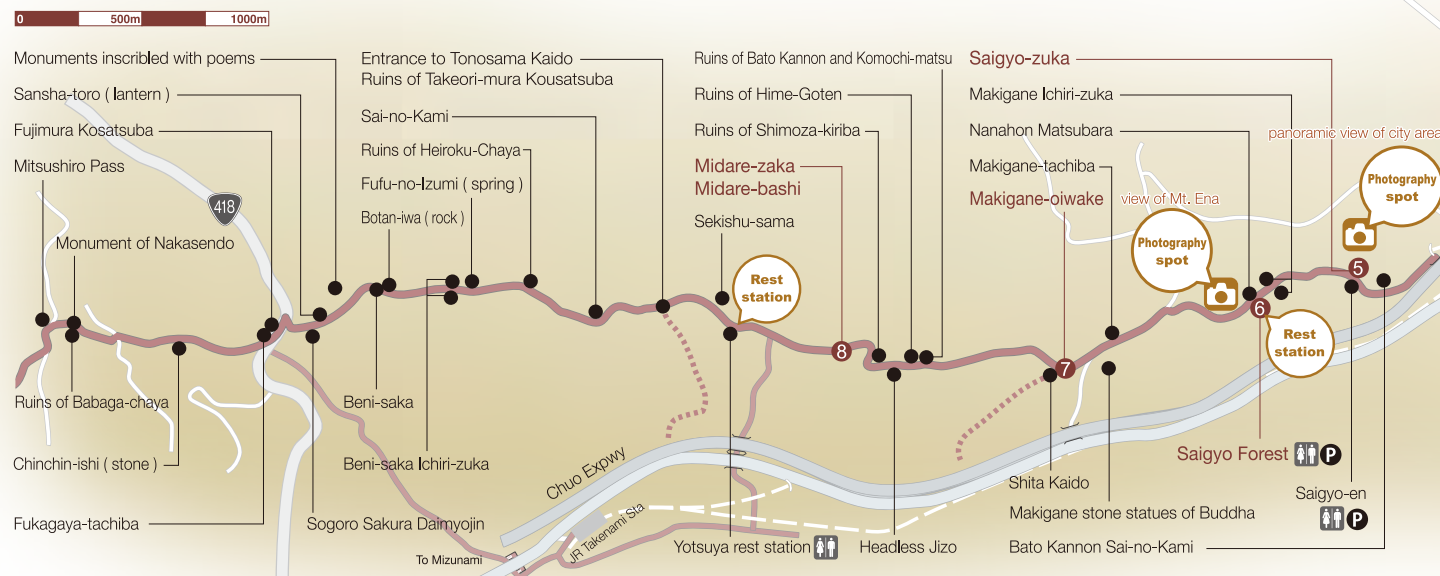


Nakasendo

The historical road used by travelers 300 years ago.

Memories of travelers and historical personages who came and went along the road still remain here.
Time travel to an ancient post station.

The coastal Tokaido and the Nakasendo which goes through mountains were both well-developed roads in the Edo period. There are 69 post stations along the Nakasendo and the Oi-juku is the 46th station from Tokyo. The front gate of noble Honjin , a village headman’ s house with lattices, and guest houses remind you of the Edo period. You can find 6 “Masugata” street corners which delayed invaders. The famous Japanese poet in the Heian period “ Saigyo-Hoshi” once visited Ena and composed poems. There remains a memorial park, his mortuary tablet, and ruins of his hermitage. You can find a museum of Japanese wood block prints and Gohei-mochi shops in the city center.



8 Midare-zaka Midare-bashi

The mountain path from Makigane to Okute-juku is so steep that travelers lost their breath and Daimyo’ s processions could not keep steadiness.



7 Makigane-oiwake

Shita Kaido(back street) which leads to Nagoya via Takanami, Kamado, Toki, and Tajimi starts at this junction. Around the junction is a resting place and there used to be lots of teahouses.



6 Sakura 100 Selections Park

100 kinds of cherry trees are planted in the park which is located in Saigyo Forest along the Nakasendo. From early April to early May, you can enjoy the variety of cherry blossoms that bloom here.



5 Saigyo-zuka

At the side of the stone-paved slope is a tower erected for the repose of Saigyo Hoshi.



Access

- Oi-juku : 10 min walk from Ena Sta. 5 min drive from Ena IC
- Saigyo-zuka : 25 min walk from Ena Sta. 3 min drive from Ena IC



Post station with tangent corners “Oi-juku”

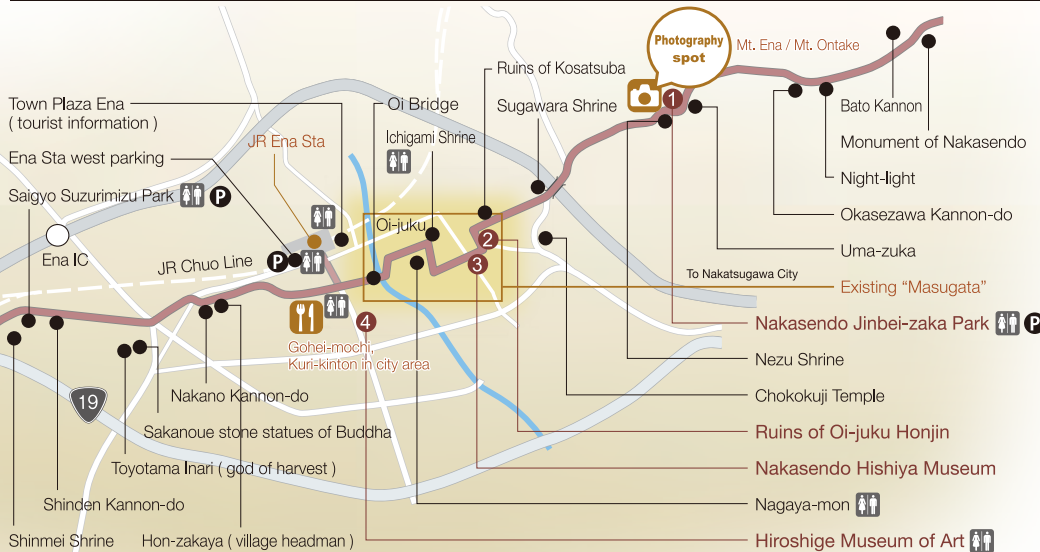
Oi-juku is the 46th post station along Nakasendo. In Oi-juku, Nakasendo runs about 710m long and there used to be 41 guest houses in 1834. Although most of the town houses at that time were gone, 6 “Masugata” remain the same.



Information on Masugata



Old private houses



Time required(hr)

Okasezawa ● Ena Sta. 1.0 Ena Sta. ● Yotsuya rest station 2.0 Yotsuya rest station ● Monument of Fuji-Nakasendo 1.0



4 Hiroshige Museum of Art

About 500 works are displayed featuring Hiroshige Utagawa’ s Ukiyoe. (wood block prints)

Admission:adult \500 child \300
 (for special program, adult \800 child \400)
Closed on Mondays, day after holiday, and during new-year holidays

TEL:0573-20-0522



3 Nakasendo Hishiya Museum

Hishiya was a dominant merchant house in Oi-juku. The building was reconstructed in the early Meiji period. Now it has been designated as a cultural asset of the city.

Admission: adult \200 child \100

Closed on Mondays, day after holiday, and during new- year holidays

TEL:0573-20-0522

●A series of biographies of famous people in Ena

Imperial princess Kazunomiya

The 16 year old Kazunomiya left Kyoto for a political marriage to General Ieshige Tokugawa on the 20 September, 1861 which was the end of the Edo period. She stayed in Okute-juku , had a lunch in Oi-juku, and stayed in Nakatsugawa-juku. Her procession had such a large number of people that whole village with the neighboring villages took care of them.

● Legend of Saigyo

Saigyo was a Japanese poet as well as priest in the Heian period. He left home to become a priest and went on a pilgrimage. He stopped by Oi-juku in 1187 and saw a golden light shining on Mt. Hananashi. So he walked toward the light and found 3 statues of Buddha enshrined in a temple on top of the mountain. He thought they were noble and built a hermitage to train . The record of his stay and his mortuary tablet are preserved in Chokokuji Temple.



Saigyo Suzurimizu Park

● Local Eats

You can buy Gohei-mochi, Kuri-kinton, and Kiku-gobo which are 3 special foods around this area at souvenir shops and specialty stores along Nakasendo. Gohei-mochi is said to have been a lunch for those who worked in mountains. It is



Gohei-mochi



Kiku-gobo



Kuri-kinton

fun to find your favorite store since each has their own way of making Kuri-kinton

Profound learning



Ichiri-zuka

Ichiri-zuka is set on both sides of Nakasendo every 3.9km. Nakasendo is about 504km long in total.

For more information:

You can get “ Walking Guide in Ena “ and “ Walking Guide for 17 post stations in Gifu” at Town Plaza Ena located next to Ena Station.

Inquiry:
Ena City Tourist Association
TEL 0573-25-4058
http://www.hub24.jp/ena/



Ena Gorge

The story of constructing a dam and beautiful ravine.

A brave man once dammed up the rapids of the Kiso River which used to run through a harsh land. Now the dam-made lake is full and the scenery attracts people in every season.



① Nationally designated natural monument “Kasa-iwa Rock”

This rock has weathered into a unique shape and has been designated as a Japanese natural monument. You can enjoy azaleas in spring and colored leaves in autumn around the rock.



② Trellis of wisteria

The wisteria is said to be over 400 years old. The root is 2.7m in girth and the tree spreads branches widely and in May purple flowers are in magnificent bloom. You can find very few wisterias like this in Gifu prefecture.



④ Benten Island

If you walk along the lake shore, you come to the Benten Island with the statue of Benten. The reflection of the red bridge on the lake is really beautiful.

Until the dam was constructed in the Taisho period, the Kiso River had been very fast flowing with huge rocks. Momosuke Fukuzawa “King of Energy” thought that the large amount of water and the landscape were suitable for hydroelectric power generation. Therefore he tried to dam up the river, but the construction was extremely difficult due to several floods. However his wife Sadayakko Kawakami supported him and he managed to dam up the river and the dam-made lake became to be known as a beautiful nature park.

The world famous geographer Shigetaka Shiga named the area Ena Gorge in 1920. Many literary men and educated men loved the area, and a monument to him was built in the park. There is a walking path in the Sazanami Park on the right bank of the lake. You can enjoy cherry blossoms, wisterias, and azaleas during their blossoming seasons. You can also enjoy the view of strange rocks and precipitous cliffs by taking a cruise from the jetty near the souvenir shops. Ena Gorge attracts you with cherry blossoms in spring, fresh green leaves in summer, colored leaves in autumn, and waterfowl in winter.



③ Sazanami Park

This park is located on the long slender peninsula in the ravine. The park has a walking path on it, so you can take a walk enjoying flowers of the season. During cherry blossom season, people light up the park from sundown to 10 p.m. The entire park shines mysteriously on the lake at night.



Get relaxed in Ena Gorge hot spring.

Ena Gorge hot springs gush out beside the beautiful ravine of the Kiso River. There are three hotels which have public bathhouses with a magnificent view of Ena Gorge. The Enakyo Mineral Spring is radioactive, the Enakyo Yumoto and Okudo Springs are chloride. It is best to take a bath while watching a sunset behind Mt. Kasagi. Day guests can take a bath at each hotel. Refer to the back of the attached map for details.



Oi Dam (Ena Gorge round trekking course)

You can visit the historical places of the Oi Dam like a monument of Momosuke Fukuzawa and an autographed relief of Yukichi Fukuzawa(Momosuke' s adoptive father). The panoramic view of the Oi Dam from a close distance is so majestic that you can imagine how difficult it was to construct the dam.



Access

- By train : Get off at Ena Sta. on the JR Chuo Line, get on a Tono-Tetsudo bus for Ena Gorge, and get off at Ena Gorge
- By car : 10 min from Ena IC



Take an Ena Gorge Cruise to see strange rocks and rock formations.

Ena Gorge Cruise gives you an experience to see the awesome majesty of Ena Gorge very close. The jetty is located near the souvenir shops. A round trip is about 20 km long and takes about 30 minutes. You feel comfortable on board with a panoramic view, air conditioning and heating.

Business hours : 9:00 ~ 16:00 fare ¥1250
(Business hours change depending on seasons)

Inquiry TEL 0573-25-4800



● A series of biographies of famous people in Ena



Momosuke Fukuzawa

Momosuke Fukuzawa, formerly Iwasaki, was born in Saitama prefecture and was very poor in his childhood. When he entered Keio Gijuku, he happened to marry the daughter of Yukichi Fukuzawa. Poverty made him energetic. After he had accomplished some businesses, he started an electric business in 1908. He constructed Shizumo Power Plant in the Kiso River system in 1919 and constructed power plants one after another. Therefore people called him “king of Electric Power” .

Sadayakko Kawakami was born in Tokyo and became a geisha. She married Otojiro Kawakami in 1890 and people called her the first actress in Japan. She lived with Momosuke for the rest of her life after Otojiro had passed away and she had retired from an actress.

He was often accompanied by his wife when he visited a construction site to advise his employees. They stayed in Ena for a long period to avoid humidity. She sometimes accompanied him to the bottom of the gorge while employees hesitated and her behavior did a great deal to raise the morale among employees.

● Local Eats

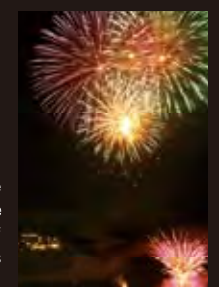
You can try edible wild plant cuisine, freshwater fish cuisine, buckwheat noodles, and matsutake mushroom cuisine in autumn.



Don't miss!

Ena Noryo Summer Festival (fireworks over lake)

About 3000 fireworks are shot off over the Ena Gorge on the last Saturday of every July. Paper lanterns are floated down the river.



For more information

You can get “ Guide for Ena Gorge Cruise” and “Guide for Enakyo Croquet Ground” at Town Plaza Ena near Ena Station.

Inquire at
Ena City Tourist Association
Iwamura branch office
TEL 0573-43-3231
<http://www.iw.vrtc.net/~fureai-yakata/kankou/>



ぐーぐー えな 恵那を車でいこう



Driving trips in Ena



Let's visit several places by car

The long-awaited weekend has come. Lots of things you want to do when you travel. You can feel refreshed by driving in mountains with clear wind and air, go fishing, try making soba, walk in the old streets, and see a dam.

The choice is yours when you travel by car. Beautiful scenery of the season may make you stop and take photos. Driving in Ena is exiting !



Southern Ena Area 2 Yahagi Dam



Southern Ena Area 1 Road Station Town of soba Rassei-Misato



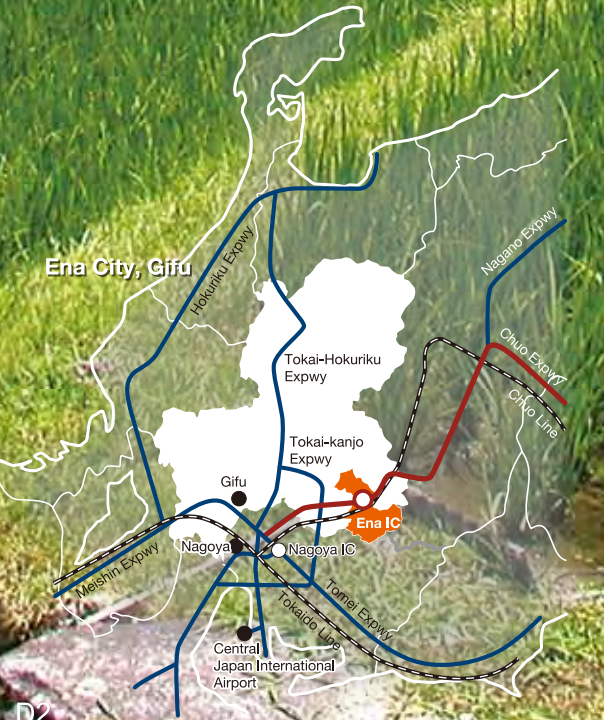
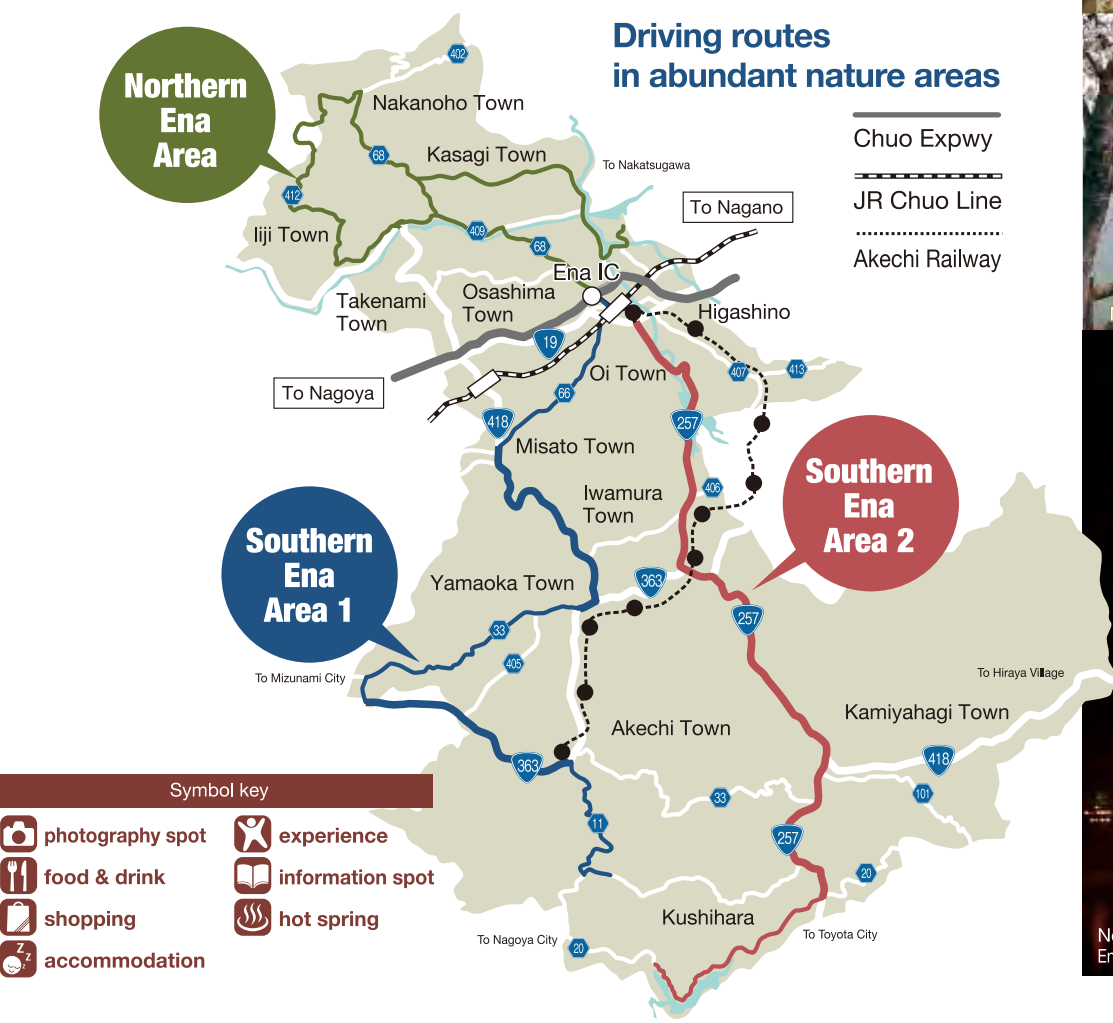
Southern Ena Area 2 Castle town in Iwamura



Northern Ena Area Ena Gorge



Northern Ena Area Ena Norio Summer Festival at Ena Gorge Sazanami Park

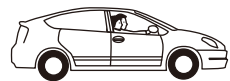


Southern area

Ena IC.



Kushihara Onsen



Drive

Let's visit several places by car.

Travel around Misato, Yamaoka, Akechi, and Kushihara areas.

This southbound travel offers you an opportunity to enjoy a hot spring and healthy foods while looking at different shapes of mountains. You can try one of specialties of the area "kanten cuisine" and experience making soba while enjoying beautiful flowers and mountains.



Reservation required
It's fun to make soba.
Soba dojo



Town of Soba Rassei-Misato

You can try to make soba by using local buckwheat powder. Local women instruct you carefully if you are beginners. Give it a try!

Address 1461-1 Sazaraki, Misato Town

TEL 0573-28-3310

Closed on Mondays, day after public holidays, and beginning of the year

Healthy House Yamaoka

It is a facility where you can learn about "kanten" and experience making kanten cuisine. Also you can taste kanten cuisine which makes the best use of kanten.

Address 3058-4 Tazawa, Yamaoka Town

TEL 0573-56-4350

Closed on Mondays and during new-year holidays
You need reservations for making kanten cuisine.

Yamaoka Pottery and Culture Center

You can learn the basis of making ceramic pottery by painting on a lampshade.

Address 1105-1 Hara, Yamaoka Town

TEL 0573-56-4567

Closed on Thursdays and during new-year holidays
You need reservations for making a ceramic pottery

Obachan-ichi Yamaoka

All the road station staff welcome you with hospitality. They sell fresh vegetables and hand made products.

Address 1565-169 Tashiro, Yamaoka Town

TEL 0573-59-0051

Parking 30 cars

Closed on end of the year

Origawa Dam

It is located on the valley of the Origawa River which is a branch of the Shonai River. The dam has multi-functions such as controlling flood, water supply, and producing power.

Address 1565-21 Tashiro, Yamaoka Town

TEL 0573-59-0056

Parking 30 cars

You can drive on the dam

Nihon Taisho-mura

There remain the old streets in Nihon Taisho-mura. You can find cultural assets from the Taisho period such as the stately village office and a museum with thick mortar walls.

Information
Nihon Taisho-mura local government office

Address 1884-3 Akechi Town

TEL 0573-54-3944

See W4-5 for details

Get relaxed in an outdoor hot spring bath.



Check this out!



You can eat local products such as "Konnyaku", "Hebo-sushi", and "Tofu".

Kushihara Onsen

There are large baths, an open-air bath, bubble bath, sauna, and medicinal bath.

Address 3135-2 Kushihara

TEL 0573-52-3131

Admission adult ¥600 child ¥400

Closed on Wednesdays, during new-year holidays, and from second Monday to Friday in December

おまけ 恵那を車でいこう

Why Don't you take a detour? Highlights of the area



Juro Falls (Misato Town)

Water falls about 10m. "Juro" means respect for the elderly.



Iwakura Forest (Yamaoka Town)

"Iwakura" is the ruins of ancient ritual sites in a mountain which correspond to recent shrines and temples.



Dango Cedar (Akechi Town)

This cedar looks unlike the others. It was a guardian deity for generals in the Warring-State period.

Largest volume of Hoso-kanten producing town in Japan

In Yamaoka Town, about 80% of Japanese "Hoso-kanten" is produced. Hoso-kanten is a healthy food and low in calories. It is used in making Japanese sweets. A climate with a large difference in temperature between day and night as well as many fine days is suitable for producing good kanten. You can see white carpets of kanten over the fields here and there in Yamaoka during winter.



Southern area2

Ena IC.
Okuyahagi Lake

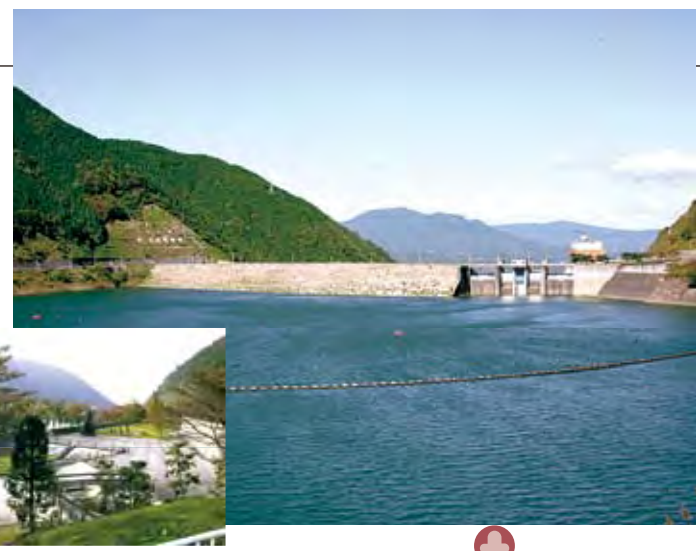


Drive Let's visit several place by car.



Travel around Iwamura, Kamiyahagi, and Kushihara areas.

This traveling route to Okuyahagi Lake attracts you with the history and nature of Ena. Tourists love this route since they drive mainly along national roads with a great view and can have a break at a road station on the way. You can feel abundant nature by watching cherry blossoms in spring and colored leaves in autumn, and by fishing and camping.



Agigawa Dam

This enormous rock dam is very scenic. On weekends, families and bikers stop by to go to the store and the museum within the dam park.

Address 2201-79 Hananashiyama, Higashino
TEL 0573-25-5295
(Agigawa Dam Administration Office)
Parking 50 cars (free)
The museum closes during new-year holidays.



Tono Ranch

This vast ranch is located on a highland near the city area. You can experience barbecuing, making butter and ice cream.

Address 4-66 Nabeyama, Osashima Town
TEL 0573-56-2737
Closed on Tuesdays
Reservation required



Ruins of Iwamura Castle

Iwamura Town has an 800 years history with the famous female castle lord. Iwamura Castle is one of the three major mountain castles in Japan and has been selected as one of the 100 superior castles in Japan. The old streets still remain.

Information
Ena City Tourist Association Iwamura Branch
Address 263-2 Iwamura Town
TEL 0573-43-3231
Parking 20 cars (free)



Mongolian Village

You can experience a Mongolian camping by staying in a yurt. Cooking stoves over an open fire and iron plates are available. There are 18 yurts for 4 people each.

Address 3587-1 Kamiyahagi Town
TEL 0573-47-3010
OPEN April 25 to October 15
Reservation is accepted from February



Kamiyahagi La Foret Fukuju-no-Sato

This road station is surrounded by abundant nature. You can play in a river. There is an information center, restaurant, and store where local products are sold.

Address 3566-1 Kamiyahagi Town
TEL 0573-48-3366
Parking 32 cars
Closed during new-year holidays, and on every Tuesday in January and February



Row of cherry trees along the Okuyahagi Lake

Cherry trees were planted to commemorate the completion of the Yahagi Dam in 1970. This area is bustling with families day and night in April since more than 1000 cherry trees are in blossom and look like a tunnel.

Address Ono, Kushihara
Season April
Parking 20 cars
People light up the area during flowering season

恵那を車でいこう

Why Don't you take a detour?
Highlights of the area



Happou Nirami-no-Ryu (dragon)

Enchoji Temple possesses the huge painting on a ceiling which was transferred from Iwamura Castle.



Benkei Cedar at Ofune Shrine

This prefectural protected tree with a trunk 10.6m around grows at a steep slope of Ofune Shrine and is the second biggest one in Gifu.



Hiyomo-no-Shidare-Sakura

This weeping cherry tree has been designated as both prefectural and municipal protected tree. It is really noticeable surrounded by mountains and forests.

Mountain streams and trap for fishes

There are many suitable areas for camping and playing in the river along the Yahagi River. In summer, lots of sweetfish are released into the river and a number of people come to enjoy fishing. At Yanagase Yana, you can catch fish and barbeque them. Both adults and children get absorbed.



Sumigase Yana is open from August 1 to October 10.

Northern area

Ena IC.



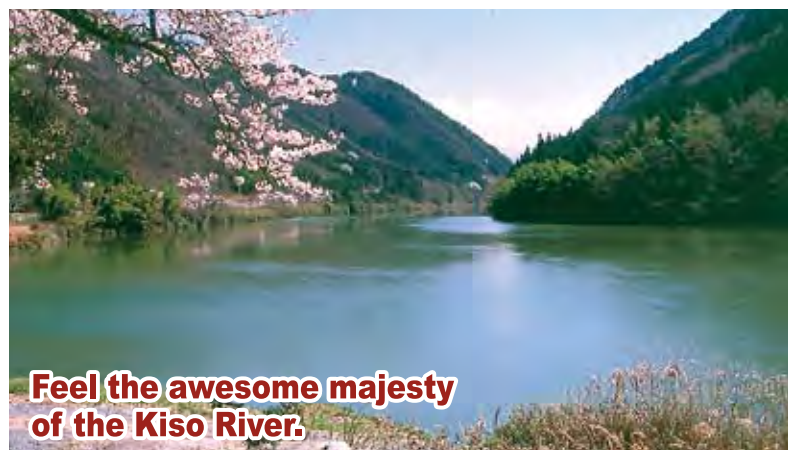
Ena Gorge



Drive Let's visit several places by car.

Travel around the foot of Mt. Kasagi.

A traveling route around the Kiso River and the 1128 meter high Mt. Kasagi is shown below. This area is very mysterious since there are rare natural monuments and architecture from the Stone Age. You can enjoy a magnificent view of the Central Alps from an observation deck as well as beautiful scenery of flowers and plants around a ravine.



Kasagi Gorge

The Kiso River basin from the Kasagi Bridge to the Kasagi Dam is called Kasagi Gorge. Cherry blossoms in spring and colored leaves in autumn are beautifully reflected in the water.

Sightseeing spots
Japanese torrey (protected plants)
Pre-Jomon Ruins
Hokuyinto at Ryugenji Temple

Address Kawai, Kasagi Town
TEL 0573-25-4058
Ena City Tourist Association
Parking free
20min from Ena IC



Iiji Kogen

It is located at the northwest-ern end of Ena and has a campground with beautiful nature.

Address 702-1 Iiji Town
TEL 0573-22-3453
(Nature Tent Village Office)
Open from July to end of September



Sakaori Tanada (rice terraces)

Tanada is rice terraces made from a steep slope. You can find it in the Sakaori district of Nakanoho Town on the foot of Mt. Kasagi. The curvaceous ridges of piled up stones are so unique that it has been selected as one of 100 Tanada selections in Japan. It's worth watching the changing rural scenery with time.

Address Sakaori district, Nakanoho Town
Parking 5 cars (free)



Fudo Falls

A clear river runs from Mt. Kasagi making the beautiful falls on the way in Nakanoho Town. It drops about 6 meters. There is a shrine when you advance deep into the mountain.

Address Nakanoho Town
(go west along the prefectural road 68)
Parking 5 cars (free)
Water falls about 6m.



Fudo Falls Direct Sales Store

You can buy special products of the area such as fresh vegetables, Hoba-mochi, Hoba-sushi, Gohei-mochi, and Karasumi.

Address Kasuri, Nakanoho Town
TEL 0573-23-2166
OPEN from April to December Weekends from January to May
Parking 15 cars (free)



Mountain trail of Mt. Kasagi

On Mt. Kasagi remain many ruins and cultural assets which tell about ancient cultures and legends during the war-torn period. Other than those historical spots, there are rare natural monuments such as Chinese fringe trees and gleaming moss. You can find them on the mountain trail. It takes about 2.5 hours to walk from the foot of the mountain to the top. And you can have a magnificent view from the observation rock near the mountaintop.



Oi Dam

It was the first power generating dam in Japan which Momosuke Fukuzawa constructed by damming up the fast-flowing river in 1924. The energy is transferred and supplied to the Kansai area.

Address Okudo, Oi Town
TEL 0573-25-4058
(Ena City Tourist Association)
Parking 10 cars (free)



Ena Gorge

It has been designated as a prefectural nature park. You can enjoy different scenery of the season such as cherry blossoms in spring, fresh green leaves in summer, colored leaves in autumn, and waterfowl in winter.

Address Enakyo, Oi Town
TEL 0573-25-4058
(Ena City Tourist Association)



Why Don't you take a detour?
Walk along the mountain trail of Mt. Kasagi.



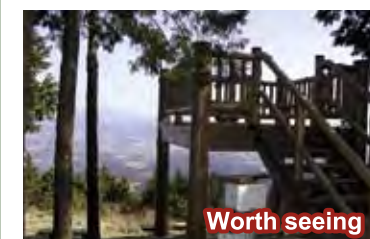
Petrograph

Petrograph is said to be letters, signs, and patterns engraved on a rock during the prehistoric age. Many petrographs were found on the 1128m high Mt. Kasagi and around the foot of it in 1994.



Gleaming Moss

It is a very rare plant which emits a fluorescent dim light. You can find it growing in the cave beside Kasagi Shrine.



Ichibo Senkin Observation Deck

This deck is located on the path through a forest to the mountaintop. On a fine day, you can have a magnificent view of the Port of Ise.

Have a break in a radium hot spring

This area is famous for producing high quality granite and having many faults underneath. Therefore, a large amount of high percentage radium springs gush out.



Ena Radium Onsen-kan
TEL 0573-25-2022
[See attached map for detail]

Highlights of the season

Four seasons in Ena



Spring



As the ground thaws, flowers such as pheasant's eye, star magnolia, rhododendron, Japanese water iris, and wisteria appear one after another. Spring is the best season to eat edible wild plants and bamboo sprouts.

Flowers are in full bloom.

There are walking paths which take you into unexplored nature and to wild plants.



There are lots of fords and swimming places where children can play safely. Cool winds and the sound of stream heal you.

Since branches of the Kiso River and Yahagi River run through the city, there are many fords where you can enjoy fishing and barbecuing. There are accommodation facilities such as camp sites and cottages at cool highlands.



Summer

Best season to play in mountain stream.

Autumn



Opposite to a flowering front, the turning of the leaves comes south from mountains with the first frost of winter. The color of autumn leaves changes depending on a temperature of the year. Since autumn is the best season for sports, it is good to do some exercise and eat delicious autumn products.

Harvest season

You can play croquet on the grounds which make use of mountain slopes. Both adults and children get absorbed in the fun.



Ice fishing at the Hokonoko Lake.

You can enjoy skating at the sole rink in Gifu prefecture. You can rent a helmet and a protective equipment. When it is cold enough, you can enjoy ice fishing at a lake in the highlands and you can warm yourself in a natural hot spring.



Access : 10min drive from Ena IC 25min drive from Mizunami IC

Winter

Let's play on ice.

Charming local railway [Akechi Railway]



It runs 25.1km and there are 8 stations between Ena Station and the terminal Akechi Station. You can enjoy a calm rural landscape on board and easily access the castle town from Iwamura Station, a hot spring from Hanashiro Station, and Nihon Taisho-mura from Akechi Station. There is a Gourmet Train of some season like Kanten Train and Mushroom Train to enjoy special cuisines while watching beautiful scenery. Touring routes from each station are shown below.

See guide map

Higashino Walking route

Starting from the station, enjoy walking to Iibama Station via Agigawa Dam, Agigawa Lake, a suspension bridge, and Iwamura River ravine.



Hanashiro Get relaxed in Onsen

In front of the station is the radium hot spring called Hanashiro Onsen. You have one hour to get relaxed in the hot spring until the next train arrives.

TEL 0573-56-2020

Admission Adult ¥600 Child ¥300

Closed on every Mondays. Business hours change with seasons.

Noshi

Abundant nature

You can enjoy a fantastic view of Chinese fringe tree near the station.



Akechi Akechi Sta.

The retro station building is the entrance to Nihon Taisho-mura where you feel like you slipped back in time.

Kushihara

Fun tour by bus and local train.



Akechi Railway

You can enjoy cuisine of the season on Gourmet Train while watching local scenery.

Kanten cuisine ~Health Train~

¥5,500

every Wednesday and Thursday from April to November

Full-course of Kanten ~Kanten Train~

¥5,000

every Friday and Saturday from April to November

Cuisine of spring ~Ran-Ran Train~

¥4,000

every Tuesday, Friday, Saturday, and Sunday in April and May

Mushroom Train

¥5,000

every Tuesday, Friday, Saturday, and Sunday from September to November

Japanese Yam Train

¥4,000

every Thursday, Friday, Saturday, and Sunday from December to March

Bicycle Train

You can get on a train with your bicycle and get off where you want to bike. (The stations where the train stops change with time.)

Adult ¥1,500 child (10 years old and over) ¥1,000

Service period: Every second Saturdays from April to November

Inquiry: Ishidatami Group
TEL 0573-65-3534

For more information, call Akechi Railway Company

TEL 0573-54-4101

<http://www.12.ocn.ne.jp/~aketetsu/>

Sightseeing bus

Several routes of a sightseeing bus tour are available in spring and autumn.

Examples

- Spring
 - Flower watching
 - Ena Gorge Cruise
- Autumn
 - Moors in Nenoue Kogen
 - Birthplace of cyclamen, Nihon Taisho-mura, and Akechi Railway
 - Stone pavement in Ochiai, Magome-Juku, and Nakasendo

Routes change with time.

For more information, call Ena City Tourist Association.

TEL 0573-25-4058

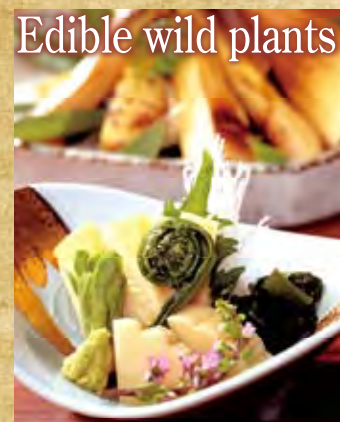
<http://www.hub24.jp/ena/>



Specialties in Ena

There are lots of delicious foods in Ena . Rich flora and a clean climate create tasty mountain products and pure water.

Edible wild plants



As the ground thaws, the best season to eat slightly bitter edible wild plants like butterbur scapes, bracken, and bamboo shoots arrives.

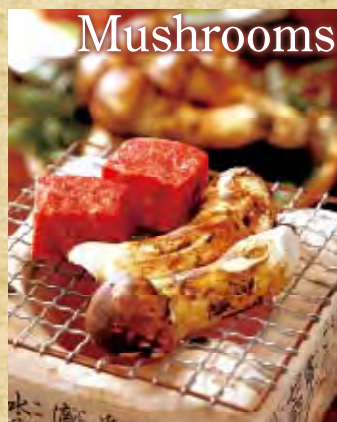
Season:
from March
to May

Try freshwater fish cuisine during a hunting season. Ena City has clear streams where fishes like Amago live.



Freshwater fish

Mushrooms



You can eat not only Matsutake mushrooms which are chewy and rich in aroma but also other fresh mushrooms by several cooking methods.

Season:
from September
to November

Many hot-pot dishes simmering local fresh beast meat and vegetables are very sumptuous during winter.



Nabe

Season:
from December
to February

Try variety of dishes that all use natural ingredients.

Gohei-mochi



all year round

The smell of skewered rice balls with mild miso sauce is mouth watering. There are straw sandal shaped and dumpling shaped skewers.



Local dishes in Ena.

Recommendations!



all year round

Kanten dishes

Yamaoka Town is famous for producing kanten in Japan. 100% agar-agar kanten is healthy and rich in dietary fiber. A traditional multi-course Japanese dinner full of Kanten is recommended.

Kanten noodle



Hoba-sushi



Traditional sushi with edible wild plants on it and wrapped in a large leaf of magnolia hypoleuca. People used to carry it when they went to work in the mountains.

Carp dishes



You can try traditional carp dishes like a candied carp and etc.

Steamed rice with Matsutake mushrooms



You can try it at a local restaurant in autumn.

Steamed rice with chestnuts



Traditional home cooking using lots of chestnuts.

Hebo-meshi



It is a local preserved food in which rice and wasp larvae are cooked salty-sweet. It contains plenty of animal protein.

Japanese yam



The peculiar stickiness and soil flavor of Japanese yam are characteristic. It is a luxurious delicacy with rich nutrition.

Hand-made Soba



You can make and eat hand-made soba at Soba dojo.

Inquiry: Ena City Tourist Association Tel: 0573-25-4058 Ena City Tourism Devision Tel: 0573-26-2111



Kuri-Kinton

The most famous traditional sweet "Kuri-Kinton" is made only from chestnuts and sugar. There are many shops selling sweets made differently with each different taste. So why don't you try to find your favorite one among them?

Karasumi



Steamed sweets made from powdered rice. They look like Mt.Fuji.

Gohei-mochi



You can eat fresh Gohei-mochi either at home or outdoors by getting vacuum-sealed ones.

Japanese sweets



Recommendations!

Specialties in Ena

Kiku-Gobo



Burdock is delicious pickled in Miso. It is a crispy food.

Yubeshi



A preserved food from a mountain village which is a cored and matured Yuzu with Miso inside.

Kanten products



Sweets, noodles, and healthy foods have been produced by processing kanten.

Konnyaku



Hand-made Konnyaku which is a gelatinous food made from devil's tongue starch. Konnyaku is a special product of Kushihara district.

Hand-made Tofu



With the utmost care is it made from soy beans harvested in Ena.

Miso



Hand-made Miso differs in taste depending on regions.

Momotaro tomato



A popular tomato with rich flavor and sweetness in a firm meat.

Castella



Traditional sponge cake made from flour, egg, and sugar in the ancient method.

Ham



Additive free ham and sausages made from healthy pigs which grow up in nature.

Local sake



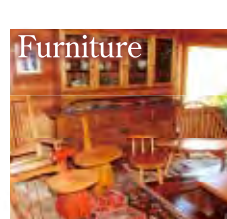
Woodworks



Guitar

Ena City is famous for producing Tono Hinoki and other high quality lumber which are suitable for woodworks. Many artists choose them for producing guitars, furniture, and other woodworks.

Furniture



Handicrafts



Direct sales stores along road

You can buy reasonable fresh vegetables which local farmers produce with the utmost care. If you happen to find a store while driving, just pull up and have a look.



Town of cyclamen

The history of cyclamen in Ena is about 80 years old. Cyclamen was introduced by the wife of American engineer who was engaged in constructing the Oi Dam in the Taisho period. Then Kojun Ito who lived in Higashino started to grow it. It was very difficult to grow it since cyclamen was not so popular and nobody knew either how to grow it or how to get its seeds. Now Ena City is famous for producing it and people do research and development in producing new varieties.

